

# AIRCONE

---





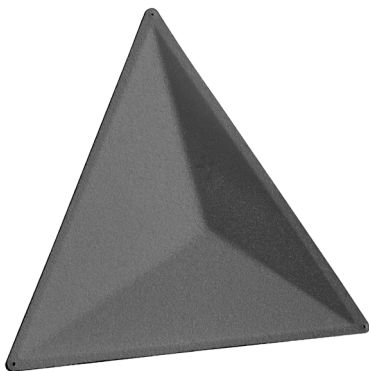
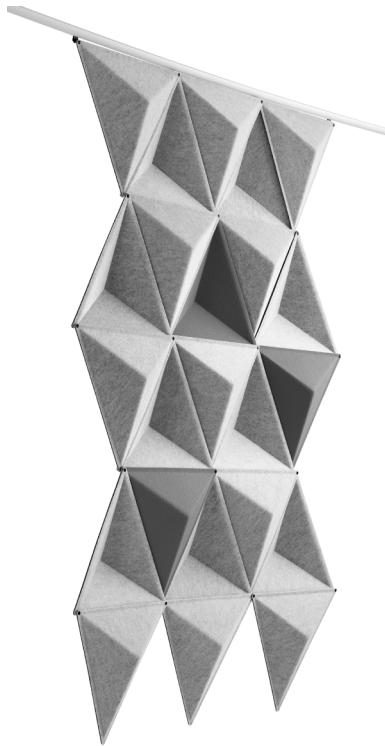
Diffusion

# Aircone

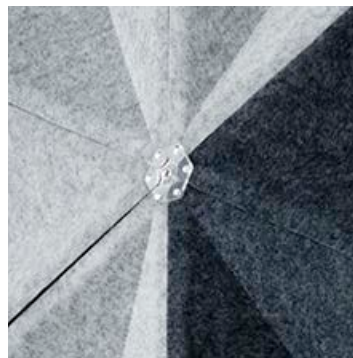
Design Stefan Borselius



Aircone is a sound absorber with a simple graphic design. The pattern formed by combining several modules can be varied in a virtually infinite number of ways.



Aircone is made from compression-moulded fabric-covered fibre felt.

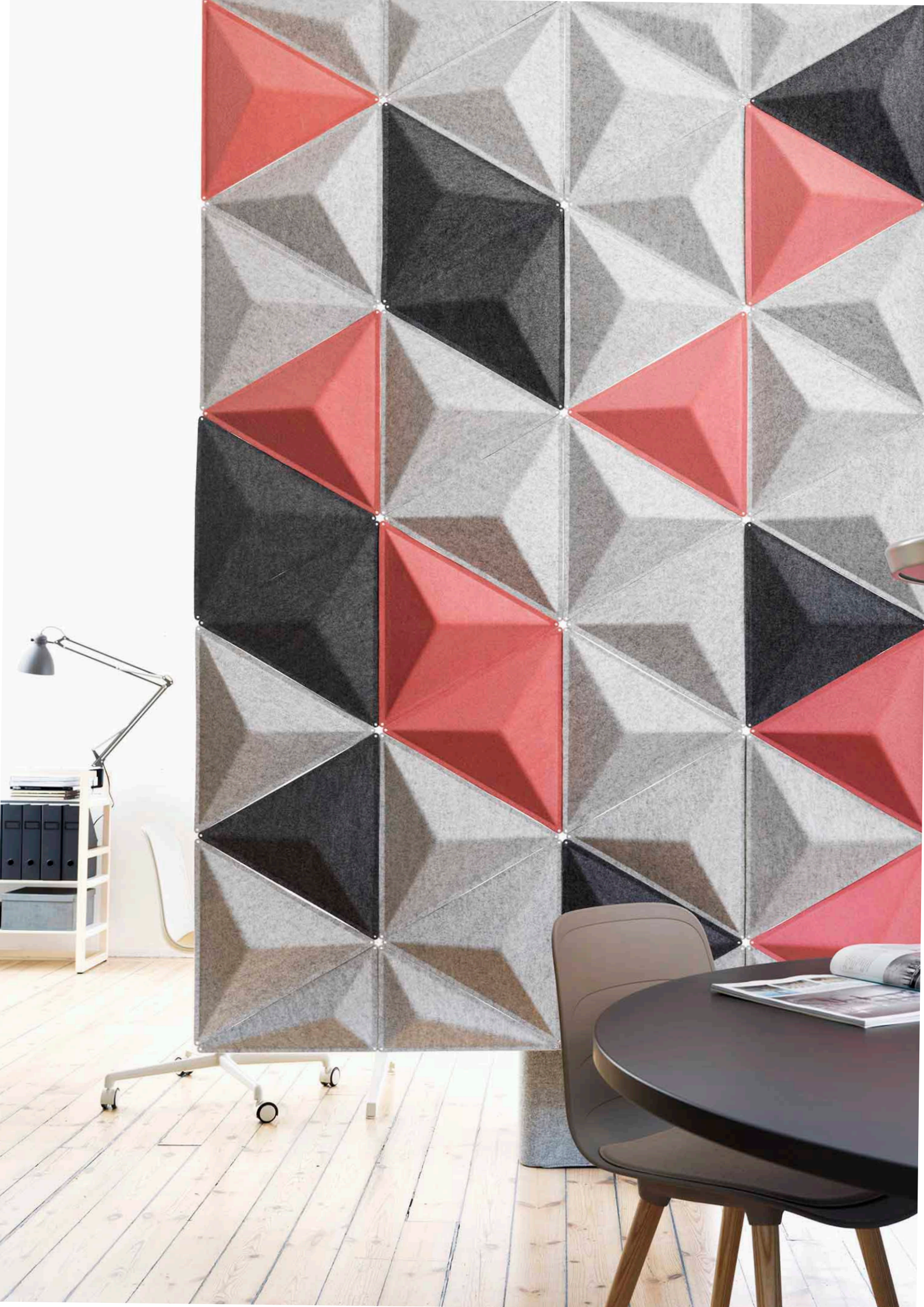


The modules are assembled together using small plastic clips.



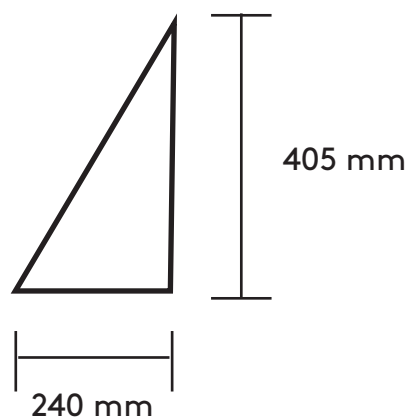
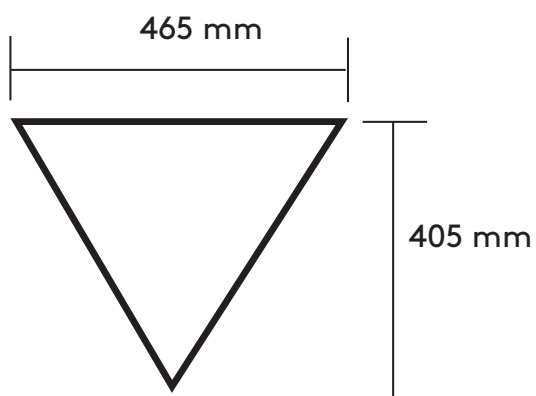
Each module is angled and has a tapered shape, this diffuse sound waves, and the product thus helps create a better sound environment.





## Technical information

---



There is a new module available, called "Aircone straight edges", which is used to create straight lines on your Aircone configuration.



Aircone can be hung from the ceiling or against the wall on an aluminium rail.

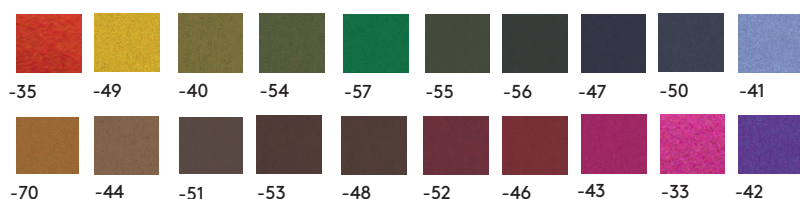
---

## Color Choices

### Felt colors



Minimum 1 st 10-pack. / Felt colors other colors, longer delivery time. Minimum 1x 10-pack.



Aircone is also available in Camira Blazer on request.

---