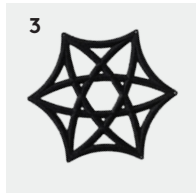
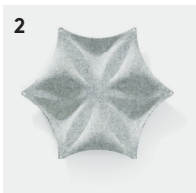
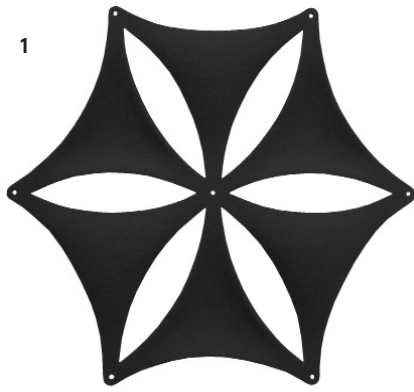


# Airflake

Design: Stefan Borselius





1. Airflake XL, blade open  
2. Airflake, blade closed

3. Airflake, line open  
4. Airflake, line closed

# Airflake

Design: Stefan Borselius

Airflake is a modular system built around the shape of a hexagon.

This product includes a variety of designs and colors, which can be combined to create flexible hanging screens on walls and ceilings.

The key feature of this product is the possibility of creating a more dynamic visual space while diffusing unpleasant sound reflections.



Diffusion



Absorption

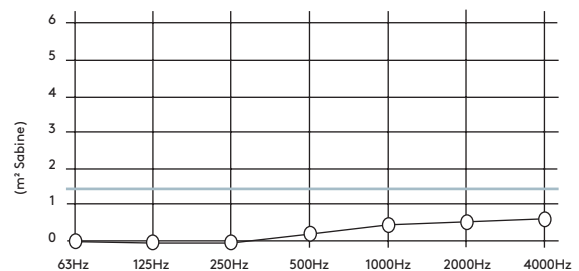
## Materials and sustainability:

Felt-laminated moulded fibre felt.  
Assembled together with small plastic clips.  
Ceiling- or wall hung with an aluminium rail.

There is no emission to air, water or soil during its production.

The sound absorbent filling contains recycled materials.

Equivalent Sound Absorption Area  
(m<sup>2</sup> Sabine)/Unit\*



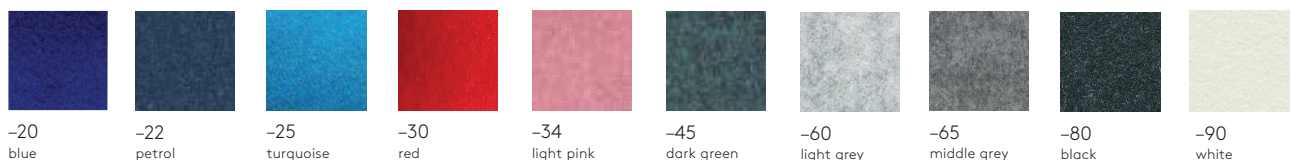
\*=Test dimensions, Airflake: 1,4 m<sup>2</sup> (blue line).

acoustic facts

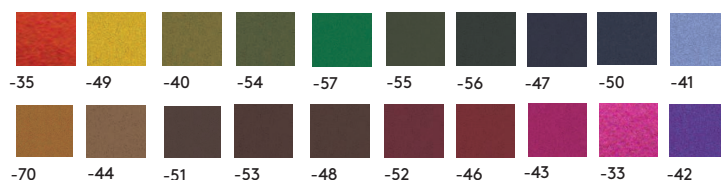
MÖBELFAKTA

## Color Choices

Felt colors



Minimum 1 st 10-pack./ Felt colors other colors, longer delivery time. Minimum 1x 10-pack.



Airflake is also available in Camira Blazer on request.