

MOVE&LEAD



EXECUTIVE SIT-STAND DESK MOVE&LEAD

OPERATING INSTRUCTIONS

SAFETY AND WARNINGS

Inappropriate use of this product may cause property or bodily injury.

Check surroundings on all sides before using the desk. Do not place any objects taller than 630 mm under the desk.

Desks should not be used in environments with high humidity or dampness.

If you need to move the desk, DO NOT lift it only by holding the desktop. Lifting this way can stress the fasteners connecting the frame to the desktop.

Please provide this operation manual to any users, installers, or support personnel operating the product.

USAGE

The sit-stand has 2 electric lifting columns.

The desk height is adjustable so the desktop can be fixed for most suitable user's position. These desks are designed only for ergonomic sit-stand position.

Do not move around, crawl or lie under the desk.

Do not sit or stand on the desk desktop.
Any other use is at user's risk.

SETUP AND INSTALLATION

Choose a placement for the desk that is a safe distance from window frames, radiators, furniture etc.

Once the desk has been assembled, adjust the feet so that the desk is level and does not shift its position.

After this, connect the desk to the outlet and the desk is ready for use. **For the first start of desk please press and hold "down" button for control box activation.**

TROUBLESHOOTING

If your desk does not function properly (does not go up or down; does not move at all) please do the RESET:

- Press and hold "Down" button for 5 seconds.

This will reset control box of columns.

- Now the desk is ready for use.
- If this does not work please contact your seller.



IMPORTANT

40
KG

**Functional load of desk is 40 kg.
Do not exceed this given load.**

1
MIN

! Please keep in mind that time for continuous desk movement upwards or downwards is 1 minute.

9
MIN

After 1 minute of unstopped operation there has to be a resting period of 9 minutes.

38
MM/S

Travel Speed Up to 38 mm/s.

HARDWARE CONNECTION

LID

The lid under the desktop is designed for easy access to the power socket block which is fixed to the frame. There is also a shelf on the right to hold laptop's charging block. Please note that the lid is held in an upward position with magnets, thus it will not hold any items that are left directly on it before closing.



GROMMET

After hardware (monitor, laptop, charger, etc.) is connected to power sockets, cables could be routed through the grommet cover to the desktop surface.



QI WIRELESS CHARGING

Qi wireless charger is integrated into the desktop (depending on the chosen desk type). Charger itself is hidden under the desktop and the place for charging your device is marked on the desktop. Place the compatible device on the marked place, beep will be heard and device will start.



MOVE&LEAD executive desks

Design by Gediminas Juška



FEATURES

- Unique design by Gediminas Juška
- Height adjustment: minimum height 735 mm, maximum 1300 mm
- Fixed height – 740 mm
- Smart cable management
- Built-in 4 power slots – 230V/110V AC output and optional wireless charger

GUARANTEE

- 5 years, except for power sockets and wires (1 year)

TECHNICAL INFORMATION

Desktop

- 27 mm MDF covered in HPL with sloping edges painted same colour as desktop;
- Short sloping edges have 45° angle and the long ones 18° angle.

Desktop types

- Desktop with a star type cut-out for extraordinary grommet and wire management;
- Desktop with a star type cut-out for extraordinary grommet and wire management, with built in wireless charging dock.

Internal leg*

- 12 mm plywood covered in HPL with brushed stainless steel.

External leg

- 12 mm plywood covered in HPL (external leg side) and lacquered veneer (inner leg side);
- Black plastic height levelling feet, H=10 mm (+5 mm).

Lid under the desktop

- 12 mm plywood covered with lacquered veneer.

Wire management and power connectivity

- The electricity supply for the sit-stand desk comes via external leg;
- Unique star type cut-out with removable 12 mm HPL / veneer cover;
- Lid under the desktop with access to hidden power sockets and cable management;
- Built-in power sockets for desk and external devices. 2-3 slots for sit-stand desk or 3-4 slots for fixed height desk will be free to use depending on the desk configuration (with or without wireless charging dock).

Inner metal frame

- Metal tube – 50x20 mm;
- Powder coated metal, black colour by default.

Lifting columns*

- Anti-collision feature;
- Two motors;
- Soft start and soft stop;
- Lifting speed: up to 38 mm/sec;
- Lifting capacity: up to 40 kg.

Desk control button type – LA*

- Up and down drive;
- 2 memory positions;
- Automatic drive on memory position;
- LED reminder;
- Integrated Bluetooth.

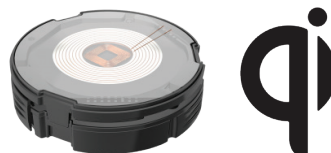


Control box*

- Input: 110-240V;
- Frequency: 50/60Hz;
- Output: 18V;
- Power Plug: EU, UK, CH, FR, US;
- Energy consumption: standby 0,01W;
- Operating Cycle: 1 minute on, 9 minutes off.

Fast Qi Wireless charger (built-in under the desktop):

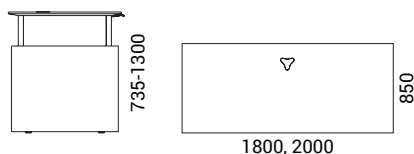
- Output: 15W charging;
- Qi certified.



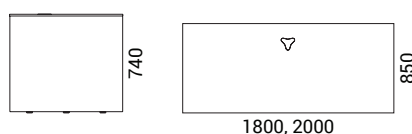
*Only for sit-stand desks.

RANGE

Sit-stand desk with or without Qi Wireless charger



Fixed height desk with or without Qi Wireless charger



Optional



Right fixed pedestal



Left fixed pedestal

MOVE&LEAD executive pedestals

Design by Gediminas Juška



FEATURES

- One fixed size
- Left or right option (desk pedestals)
- Fixed to the desk leg (desk pedestals)
- High quality wood veneer with HPL Fenix
- Desk pedestals are suitable for sit-stand and fixed desk versions

GUARANTEE

- 5 years

TECHNICAL INFORMATION



DESK PEDESTAL

Carcass

- 18 mm chipboard covered in wood veneer;
- 18 mm MFC (melamine) with 0,5/1 mm ABS edging, black colour by default;
- 18 mm MDF covered in wood veneer with 0,5 mm edging;
- Milled top panel for convenient drawer opening;
- Natural wood 0,5 mm veneer lacquered edging.

Drawers

- 18 mm plywood covered in HPL with lacquered plywood edging;
- 18 mm plywood covered in wood veneer with lacquered plywood edging;
- 15 mm chipboard covered in wood veneer with 0,5/1,5 mm edging;
- Pencil drawer bottom is milled and covered in black leather;
- Full extension runners with soft closing mechanism;
- Drawer load capacity – 10 kg.
- Removable bottle stand inside the bottom drawer (9 mm plywood covered in wood veneer).

Leg

- 16 mm chipboard covered in HPL Fenix with 1 mm ABS edging;
- Black plastic height levelling feet, H=10 mm (+10 mm).



PEDESTAL WITH TWO DRAWERS

Carcass

- 18 mm chipboard covered in wood veneer;
- 18 mm MFC (melamine) with 0,5/1 mm ABS edging, in black colour by default;
- 18 mm MDF covered in wood veneer with 0,5 mm edging;
- Milled top panel for convenient drawer opening;
- Natural wood 0,5 mm veneer lacquered edging.

Drawers

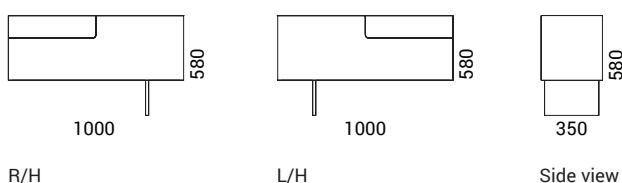
- 18 mm plywood covered in wood veneer with lacquered plywood edging;
- 15 mm chipboard covered in wood veneer with 0,5/1,5 mm edging;
- Full extension runners with soft closing mechanism;
- Drawer load capacity – 10 kg.

Leg

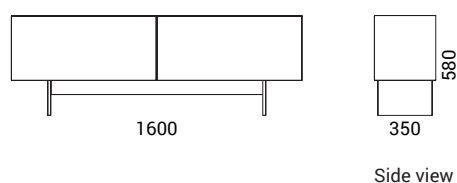
- 16 mm chipboard covered in HPL Fenix with 1 mm ABS edging;
- Black plastic height levelling feet, H=10 mm (+10 mm).

RANGE

Desk pedestal



Pedestal with two drawers



Drawers inserts included in the desk pedestal

Optional

(only for pedestal with two drawers)



File rails

ADDITIONAL INFORMATION



- Desk pedestals (BVF100-101) are not free standing and must be fixed to the desk leg (left or right) with screws. Please follow the assembly instructions (included in the package).



- Pedestal drawers are without handles. There is a special milling made for convenient opening.



- Both pedestal drawers can be converted into file drawers (file rails must be ordered separately). Pedestal rail system is universal and suitable for EU / UK / US file standards.



- Pedestal BVF160 must be fixed to the wall or another MOVE&LEAD cabinet through left or right side (fittings included in the package).

MOVE&LEAD executive cabinets

Design by Gediminas Juška



FEATURES

- Left or right option for wardrobes and cabinets
- Free standing wardrobes and cabinets
- Adjustable shelf height in wardrobes and cabinets
- Made from high quality wood veneer with HPL Fenix

GUARANTEE

- 5 years

TECHNICAL INFORMATION

WARDROBES AND CABINETS



Carcass

- 18 mm chipboard covered in wood veneer;
- Milled side panel for convenient door opening;
- Natural wood / 0,5 mm veneer lacquered edging.

Shelves

- 18 mm MFC (melamine) with 1mm ABS edging, coloured in black by default;
- Shelf load capacity: 15 kg.

Doors

- 18 mm plywood covered in HPL with lacquered plywood edging;
- 155° opening angle with soft closing system.

Base

- Black plastic height levelling feet, H=17 mm (+10 mm).

WALL SHELVES



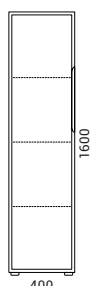
Carcass

- 12 mm chipboard covered in HPL Fenix with 1 mm ABS edging;
- 12 mm plywood covered in wood veneer;
- 18 mm MFC (melamine) with 1 mm ABS edging, coloured in black by default;
- 25 mm MDF;
- Load capacity: 10 kg.

RANGE

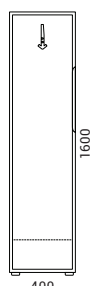
Cabinet with 3 adjustable shelves

L/H, R/H



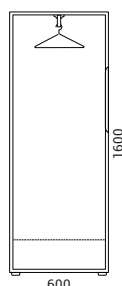
Wardrobe with hook

L/H, R/H

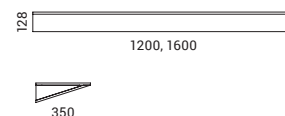


Wardrobe with pull out rail

L/H, R/H



Wall shelves



ATTENTION! Combinations with connected 3 or more cabinets in a row are not possible! Handle is accessible from side only.

Optional

(for shelves only)



Connecting bracket*

* A connecting bracket must be ordered for the installation of two or more shelves side by side (without a gap). The connection of two shelves requires one kit.