

se:café bar

Catering module for the office



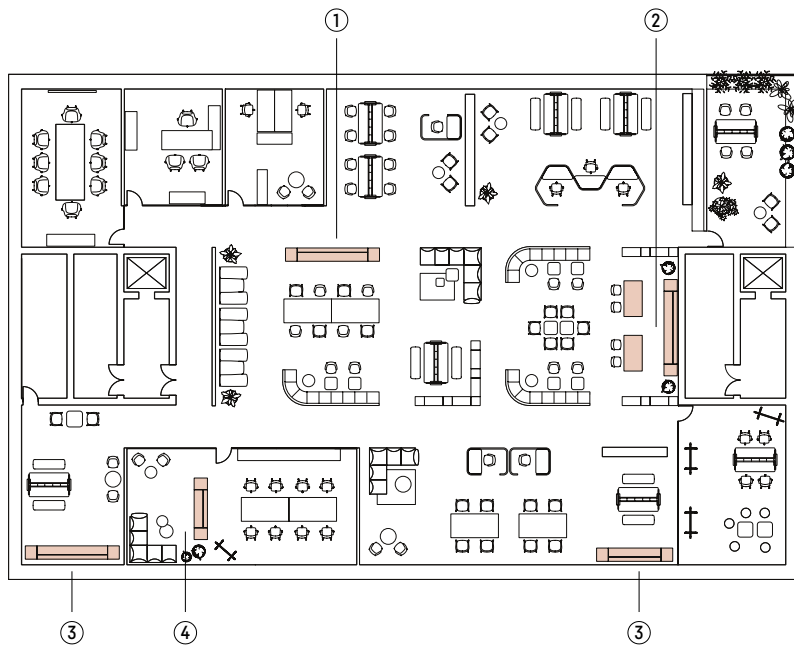


A spot for good coffee, hospitality and small talk – the se:café bar is a refreshment stop with a feel-good factor.

As a hub for spontaneous meetings and exchange in the office, catering modules create an informal and relaxed atmosphere. Communication is a matter of course here, and, thanks to the wide range of positioning options, the modules fit into any room.

se:café bar

- Thanks to their timeless design and numerous positioning options, modules fit harmoniously into any space: as a wall-positioned kitchen unit, as a room divider or as an island
- Offers all the functions required in the office: Refreshment station for hot and cold drinks, cooling food, washing up and storage space for cutlery and crockery
- The product line consists of a variety of modules in different sizes, the functions, equipment and materials of which can be individually configured, making planning significantly less complex than kitchen planning, for example
- Self-supporting construction and concealed fitting area enable installation without interfering with the building structure



Application areas

- Work café (centres of the Sedus Smart Café) (2)
- Canteen, bistro & cafeteria (alternatives to the conventional tea kitchen) (2)
- Hubs & intermediate areas (3)
- Lounge & reception areas (space-saving refreshment module for hot and cold drinks) (4)

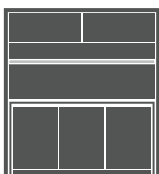








Colours



Frames, fronts, niche
back panel, countertop,
carcasses, side panels,
plinth

Frames, fronts, niche back panel, countertop, carcasses, side panels and plinth can be configured independently of each other.

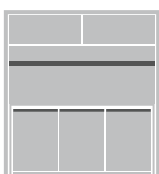
Finishes: Melamine collections (Wood Selection, Architecture Line, Colour Harmony, Soft Touch/HPL).



Island modules:
table

Island and attached table can be configured independently of each other.

Finishes: Melamine collections (Wood Selection, Architecture Line, Colour Harmony, Soft Touch/HPL).



Functional rails,
shelves, accessories,
recessed grip

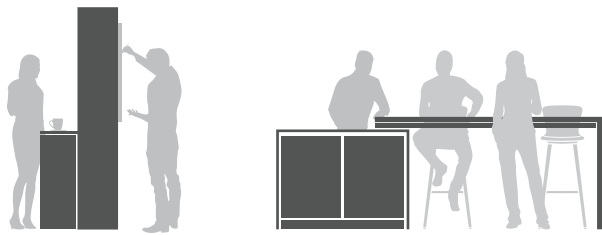
Functional rails, shelves and accessories in the niche as well as recessed grip are made of metal and are powder-coated in black.



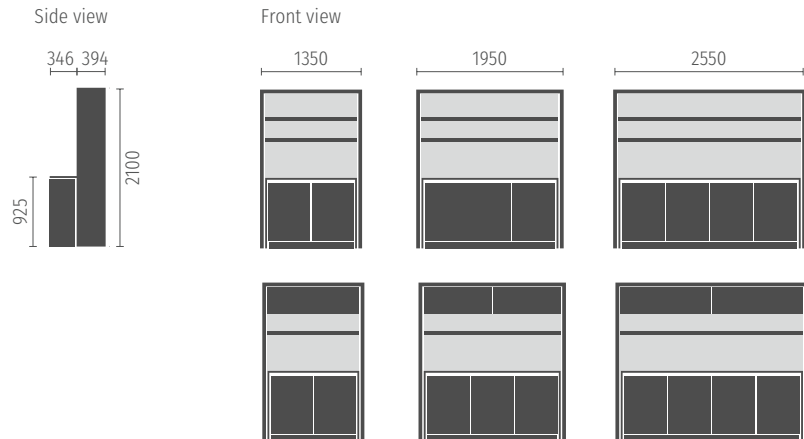
Black

Product range and dimensions (all dimensions in mm)

It is possible to install wall modules (without tall cabinets) against a wall as well as using them as free-standing room dividers. In this case, the back is fitted with functional rails for hanging whiteboards and other accessories. All island modules can be freely arranged in the room.



Wall module and room divider

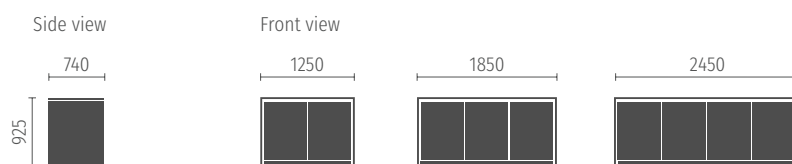


Wall module with tall cabinets

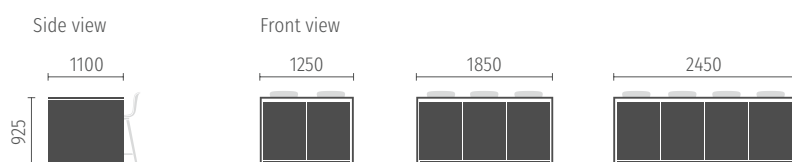




Island



Island with seating option at the back



Island with a table attached on the side

